



Features

- 1210 size
- Magnetic shielding
- High Q characteristic
- High current rating
- RoHS compliant*

Applications

- Prevention of electromagnetic interference to signals on the secondary side of electronic equipment

CMH322522 Series - Shielded Wirewound Chip Inductor

Electrical Specifications

Bourns Part No.	Inductance		Q	Test Freq. MHz	SRF MHz	DCR	I rms
	μH	Tol.%					
CMH322522-10NML	0.010	±20	15	100	2500	0.13	450
CMH322522-12NML	0.012	±20	17	100	2300	0.14	450
CMH322522-15NML	0.015	±20	19	100	2100	0.16	450
CMH322522-18NML	0.018	±20	21	100	1900	0.18	450
CMH322522-22NML	0.022	±20	23	100	1700	0.20	450
CMH322522-27NML	0.027	±20	23	100	1500	0.22	450
CMH322522-33NML	0.033	±20	25	100	1400	0.24	450
CMH322522-39NML	0.039	±20	25	100	1300	0.27	450
CMH322522-47NML	0.047	±20	26	100	1200	0.30	450
CMH322522-56NML	0.056	±20	26	100	1100	0.33	450
CMH322522-68NML	0.068	±20	27	100	1000	0.36	450
CMH322522-82NML	0.082	±20	30	100	900	0.40	450
CMH322522-R10ML	0.10	±20	30	100	700	0.44	450
CMH322522-R12ML	0.12	±20	30	25.2	500	0.22	450
CMH322522-R15ML	0.15	±20	30	25.2	450	0.25	450
CMH322522-R18ML	0.18	±20	30	25.2	400	0.28	450
CMH322522-R22ML	0.22	±20	30	25.2	350	0.32	450
CMH322522-R27ML	0.27	±20	30	25.2	320	0.36	450
CMH322522-R33ML	0.33	±20	30	25.2	300	0.40	450
CMH322522-R39ML	0.39	±20	30	25.2	250	0.45	450
CMH322522-R47ML	0.47	±20	30	25.2	220	0.50	450
CMH322522-R56ML	0.56	±20	30	25.2	180	0.55	450
CMH322522-R68ML	0.68	±20	30	25.2	160	0.60	450
CMH322522-R82ML	0.82	±20	30	25.2	140	0.65	450
CMH322522-1R0KL	1.0	±10	30	7.96	120	0.70	400
CMH322522-1R2KL	1.2	±10	30	7.96	100	0.75	390
CMH322522-1R5KL	1.5	±10	30	7.96	85	0.85	370
CMH322522-1R8KL	1.8	±10	30	7.96	80	0.90	350
CMH322522-2R2KL	2.2	±10	30	7.96	75	1.0	320
CMH322522-2R7KL	2.7	±10	30	7.96	70	1.1	290
CMH322522-3R3KL	3.3	±10	30	7.96	55	1.2	260
CMH322522-3R9KL	3.9	±10	30	7.96	50	1.3	250
CMH322522-4R7KL	4.7	±10	30	7.96	45	1.5	220
CMH322522-5R6KL	5.6	±10	30	7.96	40	1.6	200
CMH322522-6R8KL	6.8	±10	30	7.96	35	1.8	180
CMH322522-8R2KL	8.2	±10	30	7.96	30	2.0	170
CMH322522-100KL	10	±10	30	2.52	28	2.1	150
CMH322522-120KL	12	±10	30	2.52	20	2.5	140
CMH322522-150KL	15	±10	30	2.52	20	2.8	130
CMH322522-180KL	18	±10	30	2.52	20	3.3	120
CMH322522-220KL	22	±10	30	2.52	19	3.7	110
CMH322522-270KL	27	±10	30	2.52	18	5.0	80
CMH322522-330KL	33	±10	30	2.52	16	5.6	70
CMH322522-390KL	39	±10	30	2.52	15	6.4	65
CMH322522-470KL	47	±10	30	2.52	13	7.0	60
CMH322522-560KL	56	±10	30	2.52	12	8.0	55
CMH322522-680KL	68	±10	30	2.52	11	9.0	50
CMH322522-820KL	82	±10	30	2.52	10	10	45
CMH322522-101KL	100	±10	20	0.796	9	10	40
CMH322522-121KL	120	±10	20	0.796	9	11	70
CMH322522-151KL	150	±10	20	0.796	7	15	65
CMH322522-181KL	180	±10	20	0.796	6	17	60
CMH322522-221KL	220	±10	20	0.796	6	21	50
CMH322522-271KL	270	±10	20	0.796	5	28	45
CMH322522-331KL	330	±10	20	0.796	4	34	40

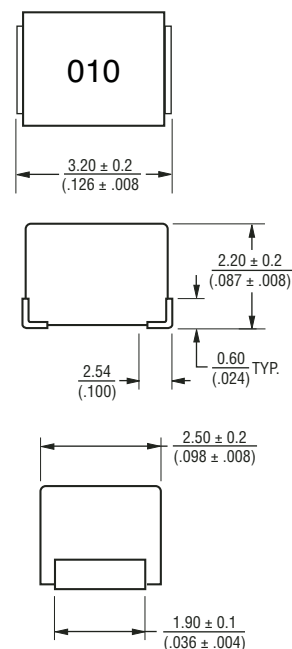
General Specifications

Temperature Rise
20 °C max. at rated current
 Operating Temperature
-55 °C to +125 °C
 Storage Temperature...-55 °C to +125 °C
 Reflow Soldering ...230 °C, 50 sec. max.
 Resistance to Soldering Heat
260 °C, 5 seconds

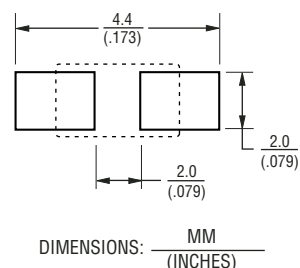
Materials

Core Material.....Ferrite
 Terminal Electrode.....Cu/Sn
 Packaging.....2,000 pcs per reel

Product Dimensions



Recommended Layout

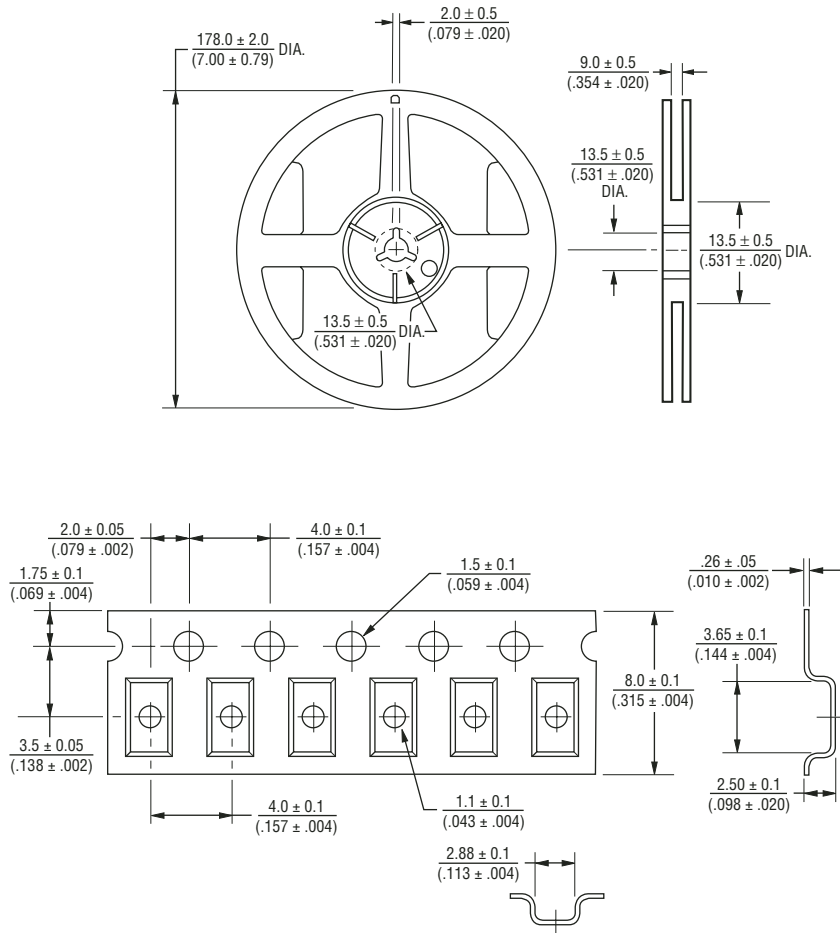


*RoHS Directive 2002/95/EC Jan 27 2003 including Annex
 Specifications are subject to change without notice. • Customers should verify actual device performance in their specific applications.

CMH322522 Series - Shielded Wirewound Chip Inductor

BOURNS®

Packaging Specifications



Asia-Pacific:

Tel: +886-2 2562-4117 • Fax: +886-2 2562-4116

Europe:

Tel: +41-41 768 5555 • Fax: +41-41 768 5510

The Americas:

Tel: +1-951 781-5500 • Fax: +1-951 781-5700

www.bourns.com

REV. 02/08

Specifications are subject to change without notice.
Customers should verify actual device performance in their specific applications.